

Histology Quiz

ANSWERS

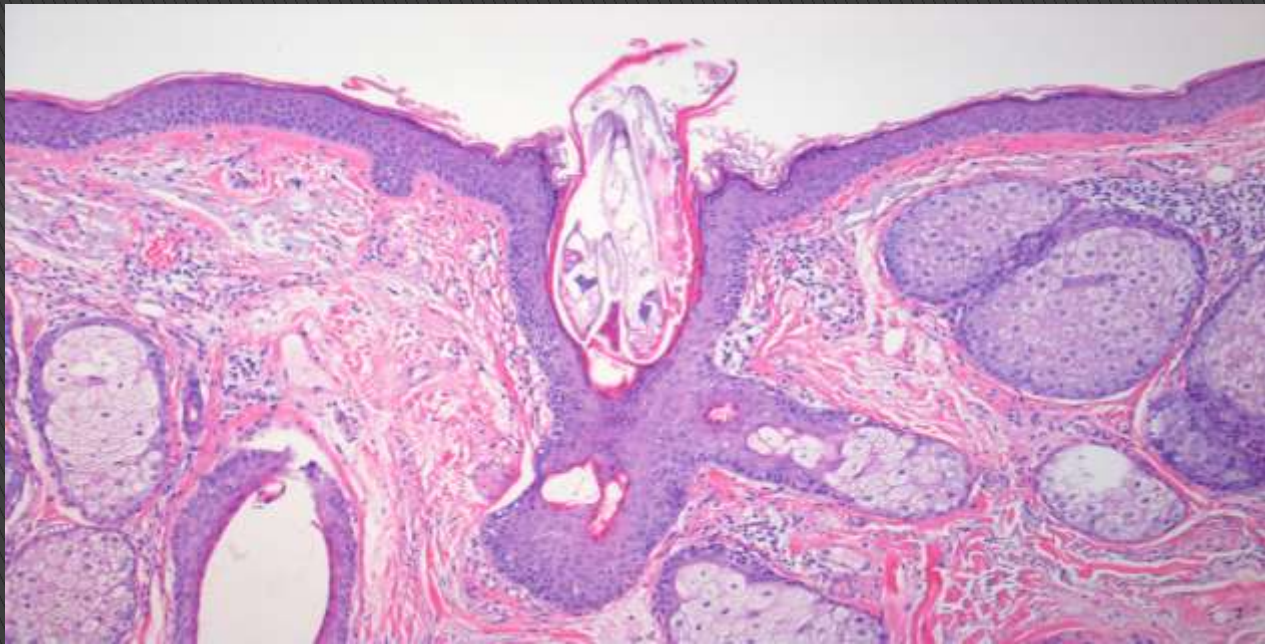
By

Nicolette James & Wendy McCreedy

Presented by

Carol Avansian Ghazvini

What is living in this hair follicle?



DEMODEX MITE (Insect)

What is this slide showing?



POLORISED PLANT TISSUE

What stain is this?



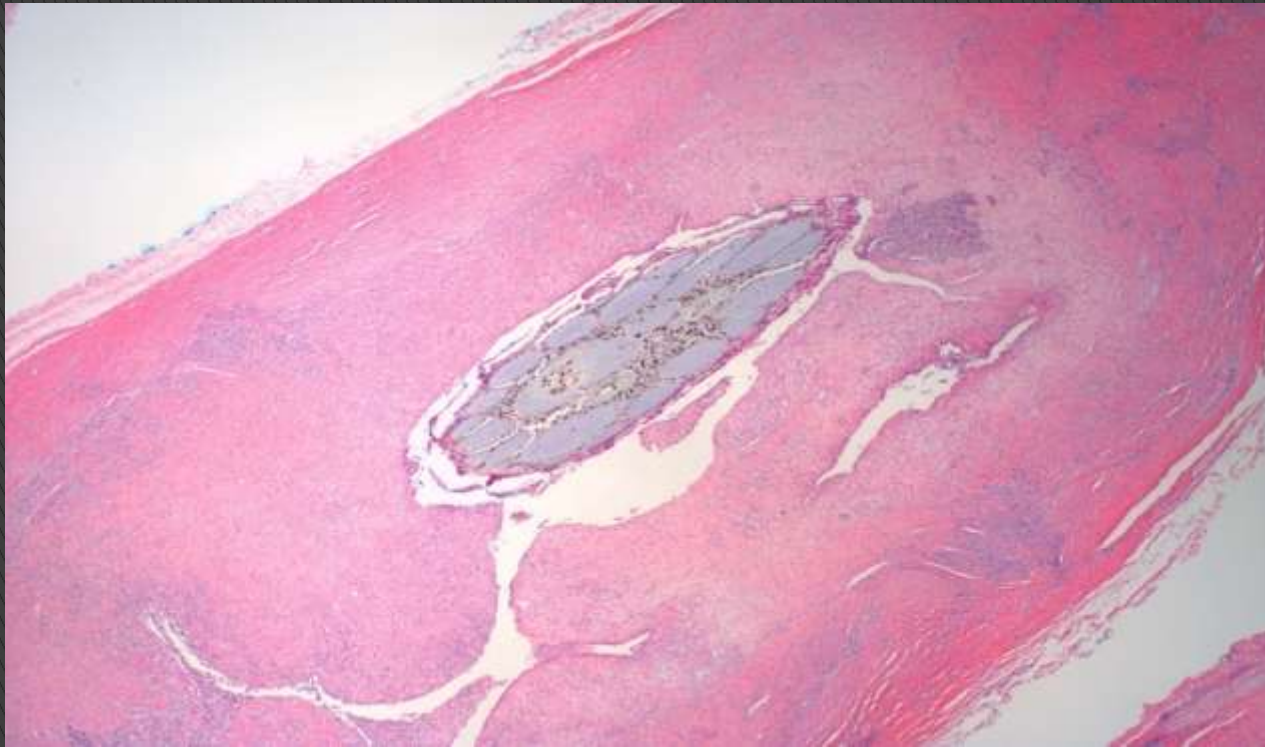
OIL SLICK FROM THE GULF OF MEXICO

Name 4 Alum Haematoxylins.



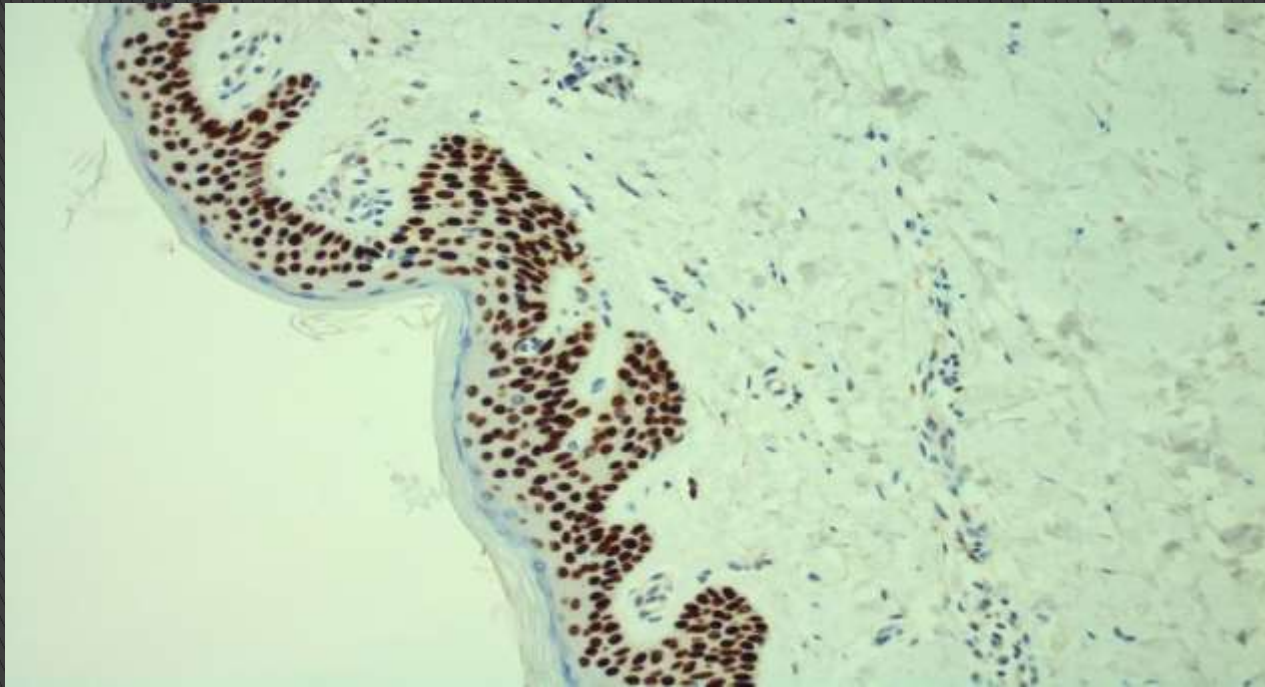
COLE'S , HARRIS'S, EHRLICH'S, MAYER'S, DELAFIELDS,
CARAZZI'S & GILLS

Is this Metal, Plant or Animal?



H&E SHOWING A PLANT SPLINTER

What is this immuno stain?



P 63

Name 4 steps you would use for chemical spill control ?

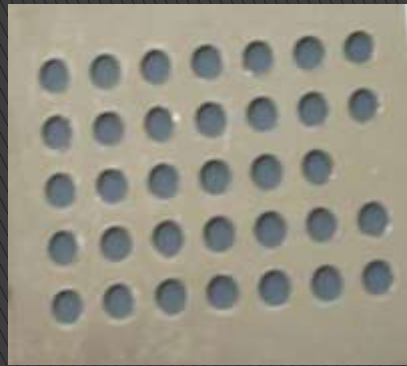


1. Notify Supervisor
2. Use appropriate absorbents
3. Work from the outside inwards.
4. Dispose of contaminated material properly.

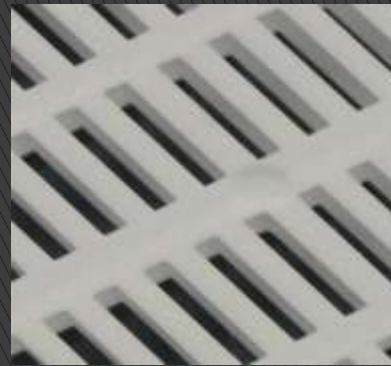
What are these objects ?



A. Biopsy pad



B. Metal Cassette Lid



C. Plastic Cassette



D. Chux Cloth



E. Forceps



F. Staining Rack



G. Forceps

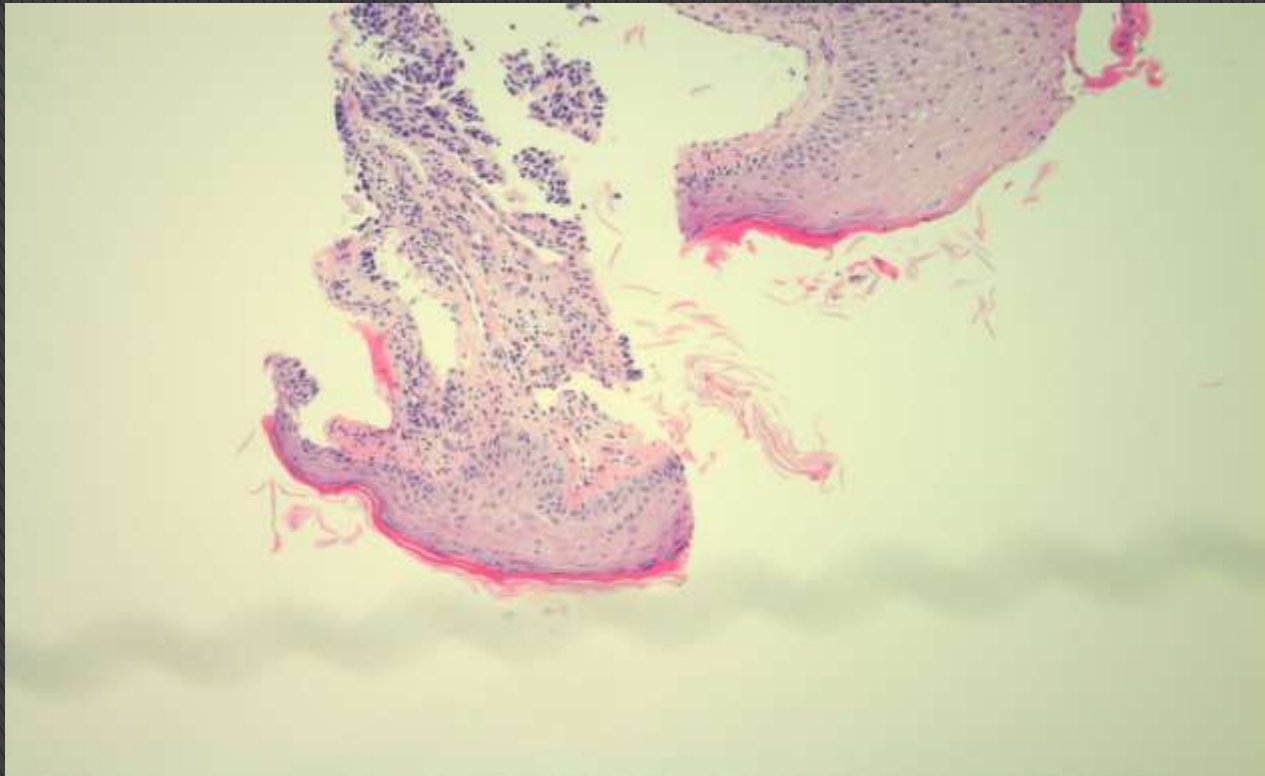


H. Cryostat Chuck



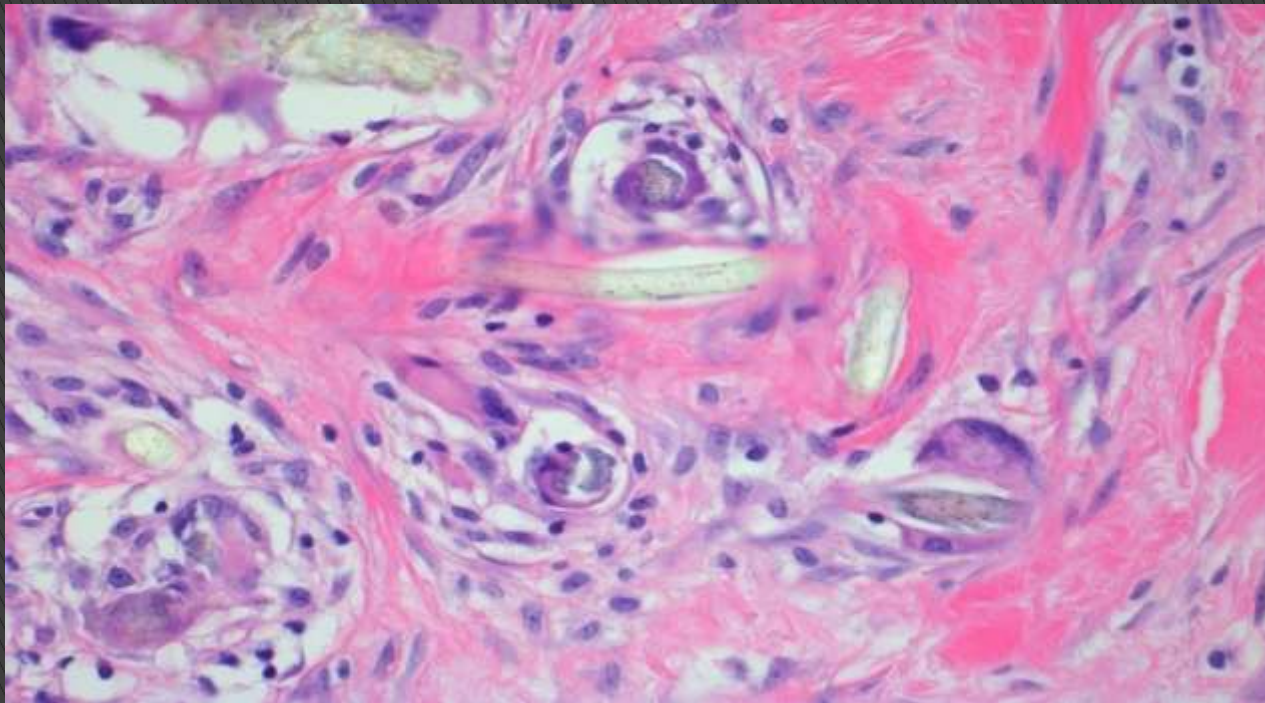
J. Wax pellet

What is this artefact called?



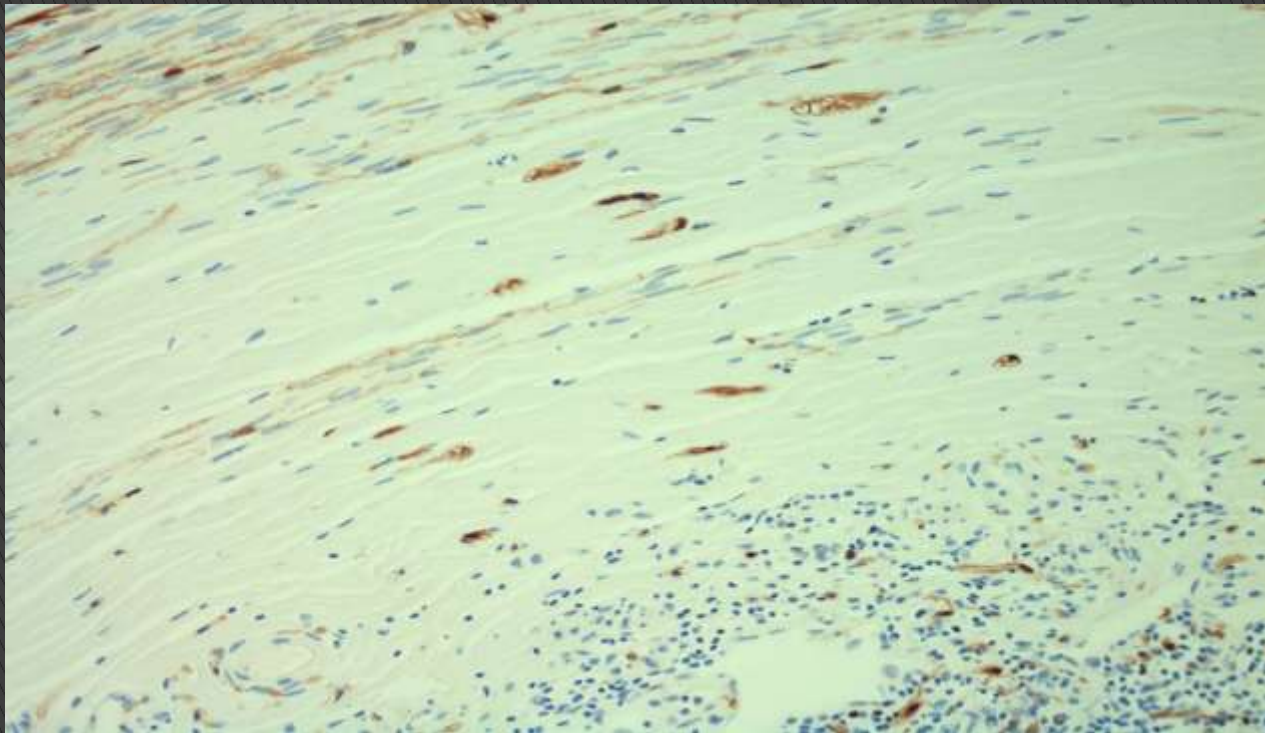
MOUNTING ARTEFACT

Name the foreign body in this H&E slide ?



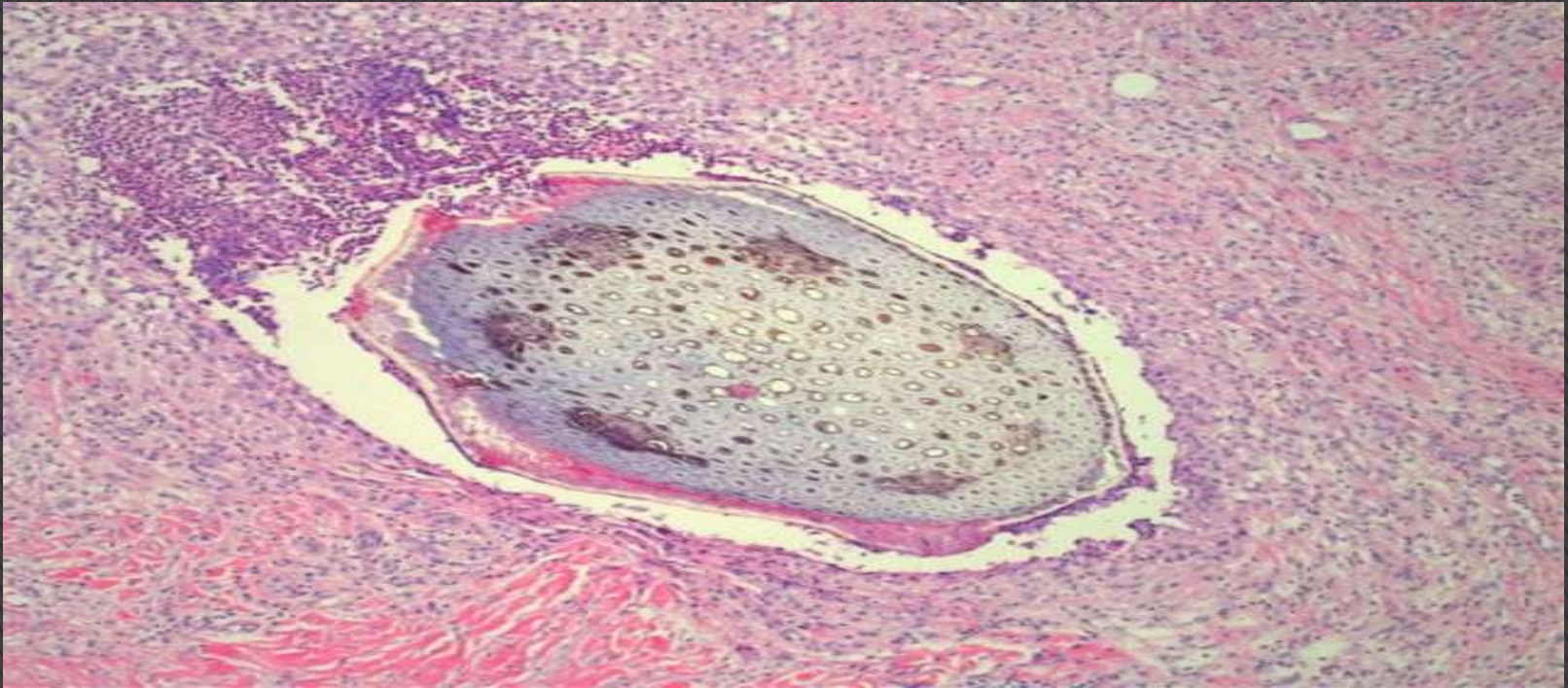
SUTURE MATERIAL

What immuno stain is this?



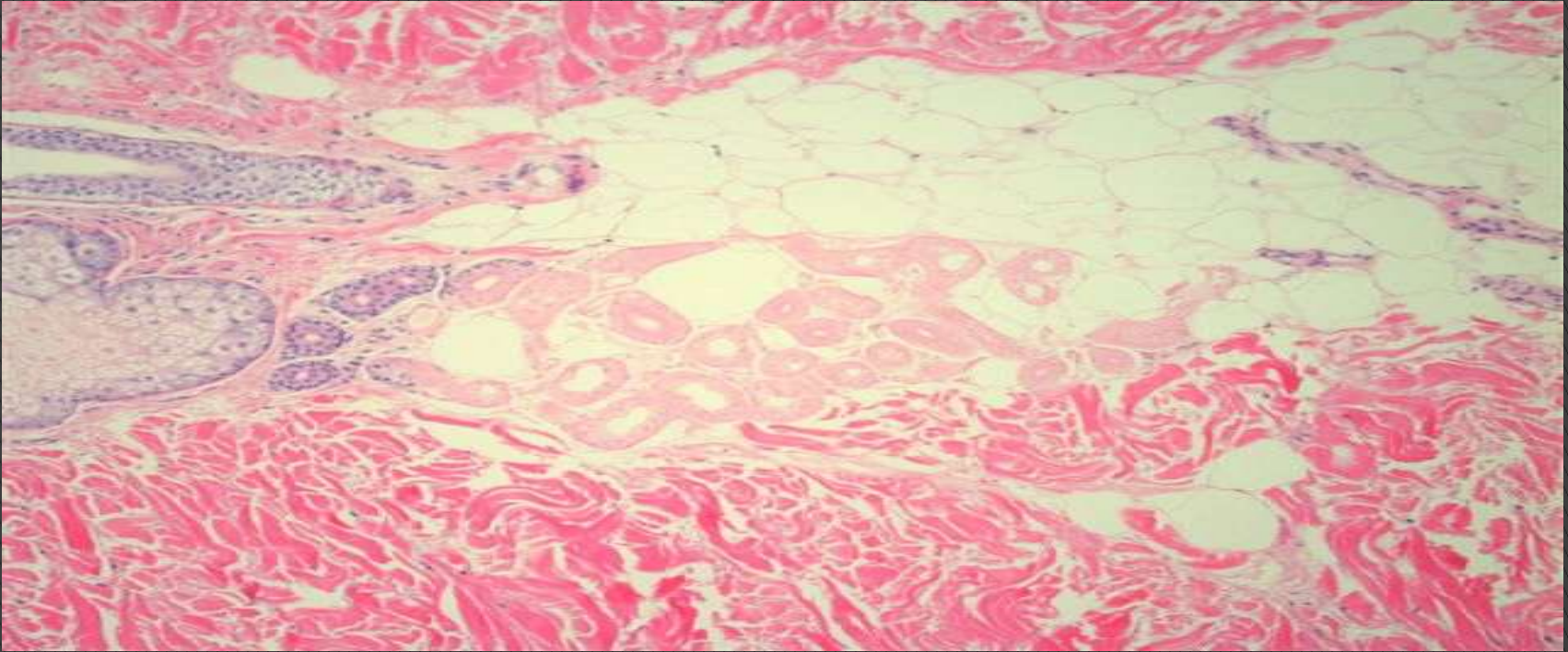
S 100

What artefact/foreign body is in this picture?



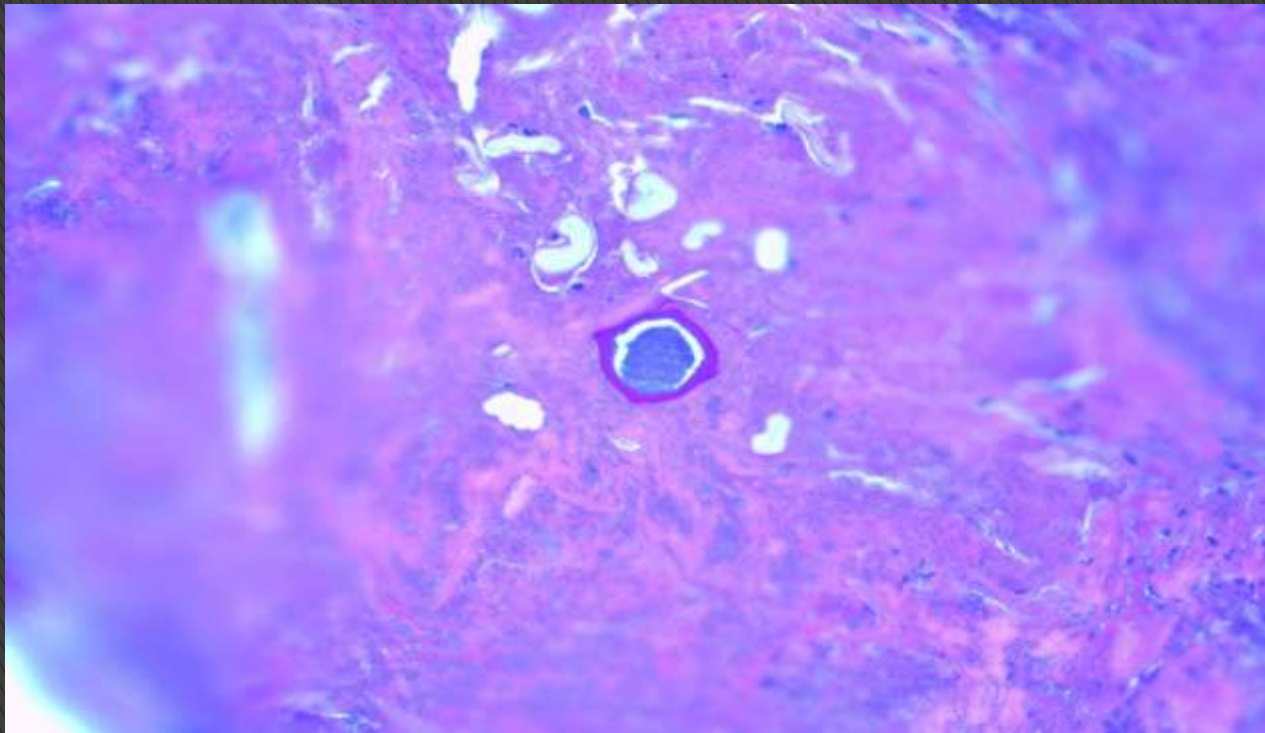
WOOD SPLINTER

What is the staining artefact ?



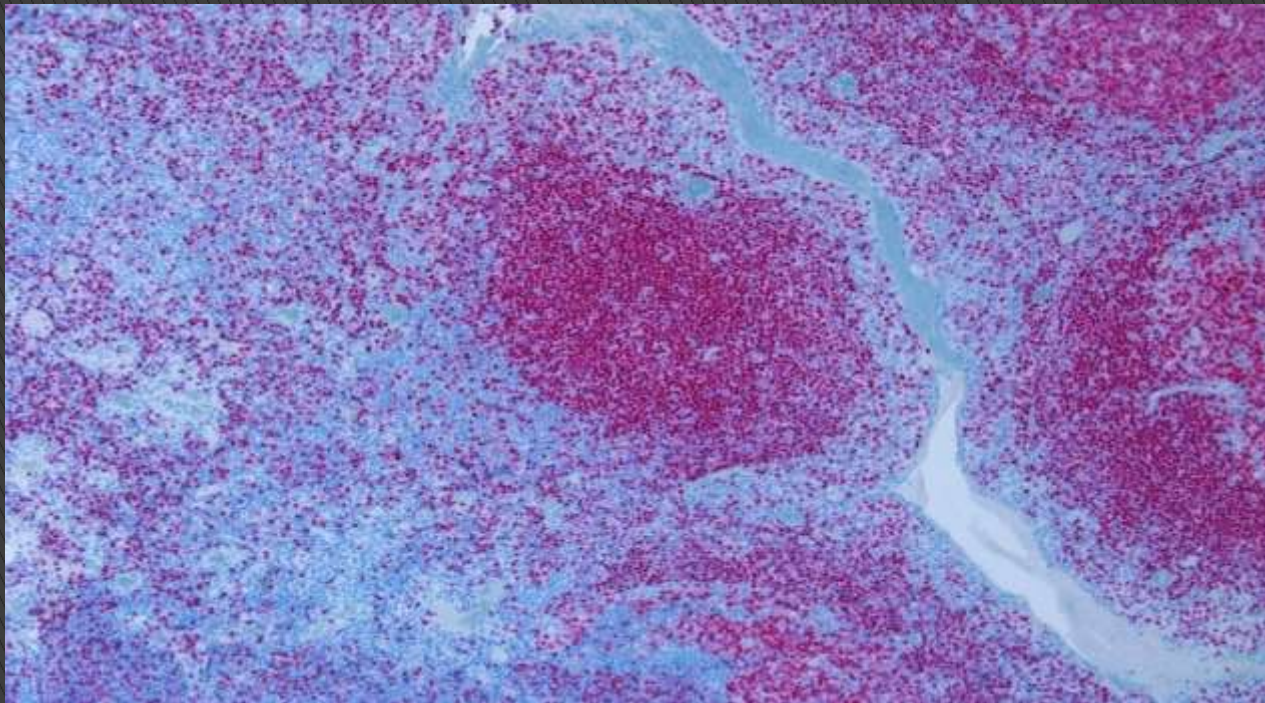
WAX ARTEFACT

What special stain was used to define this plant cell?



PAS

Which immuno stain is this?



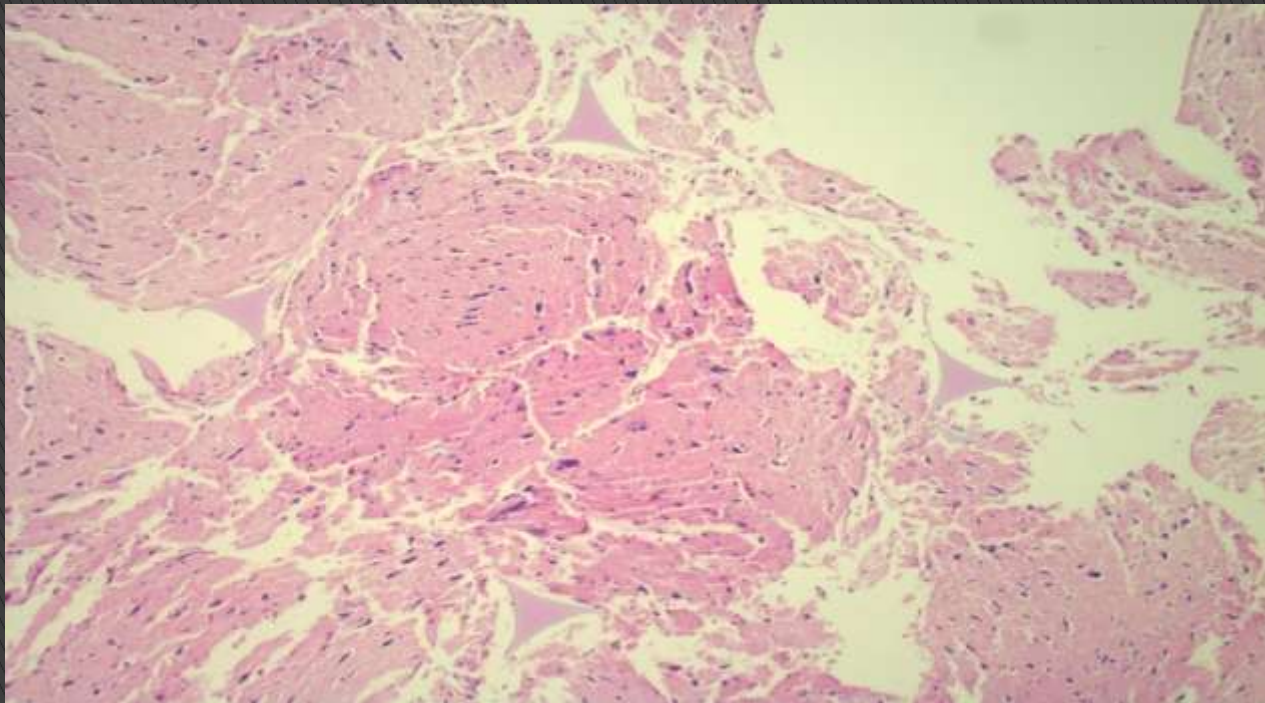
B cell marker - PAX 5

- ▶ All Dyes have a C.I. and number.
- ▶ What does C.I. stand for ?



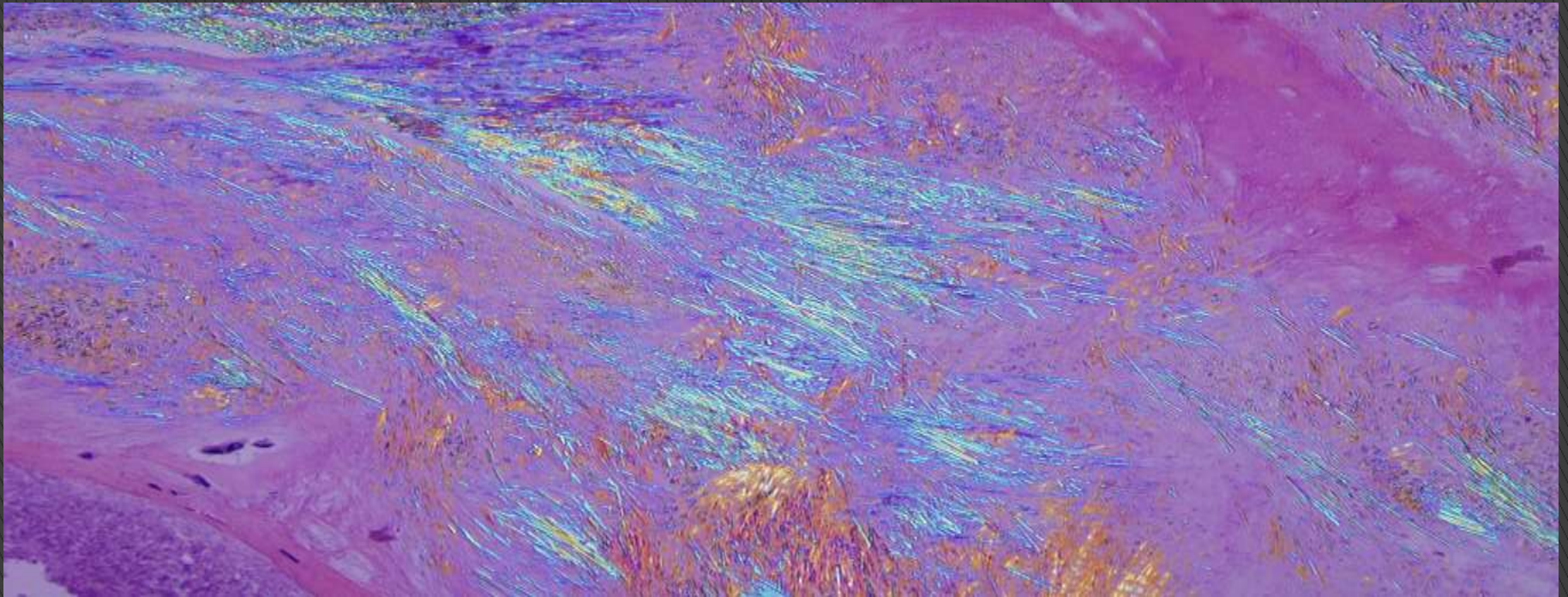
COLOUR INDEX

What hidden anomalies are in this slide?



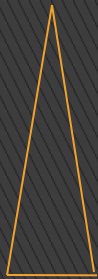
BIOPSY PAD ARTEFACT

What does this polarized section show?



GOUT CRYSTALS

What are the names of these knife profiles ?



A

PLANE WEDGE



B

PLANO CONCAVE



C

BI CONCAVE



D

TOOL EDGE

What is in this Picture ?



MICROTOME

- ▶ Whilst every effort has been made to ensure the
- ▶ answers are correct, the Judges decision is final and no discussion or debate will be entered into.

- ▶ Thank you for your participation.

THE END